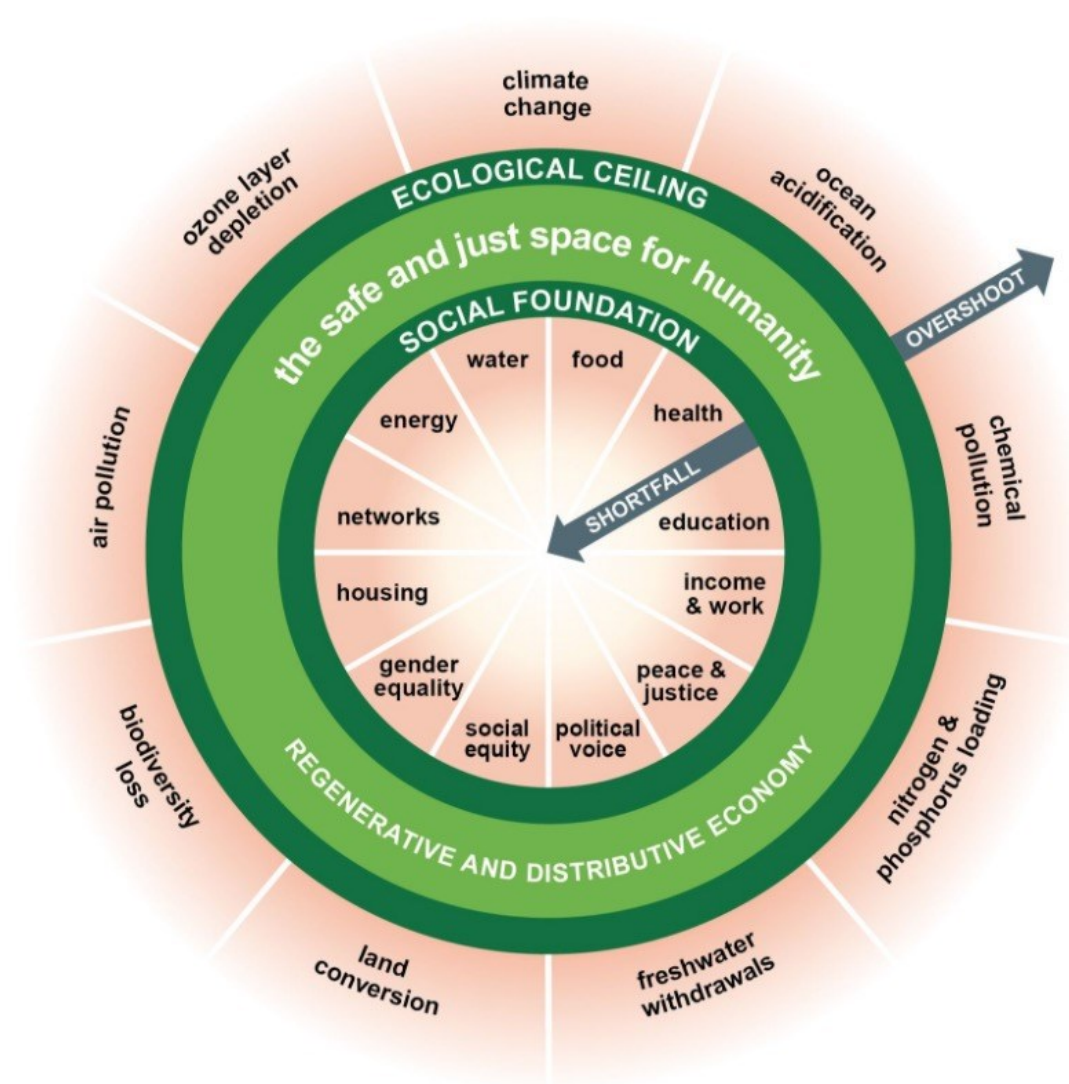


# Feedbacks on simplified LCA for digital products

Thales CDI

March 26<sup>th</sup> 2025

[www.thalesgroup.com](http://www.thalesgroup.com)



Source : [Doughnut](#) | [Kate Raworth](#)

# A few products from Thales CDI



Mobile Connectivity Solutions



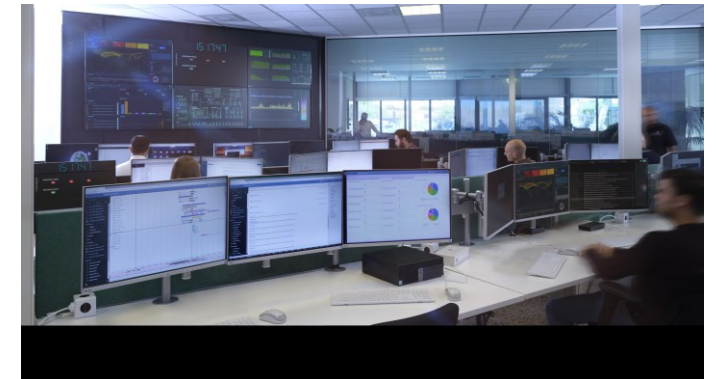
Payment Services



Identity & Biometric Solutions

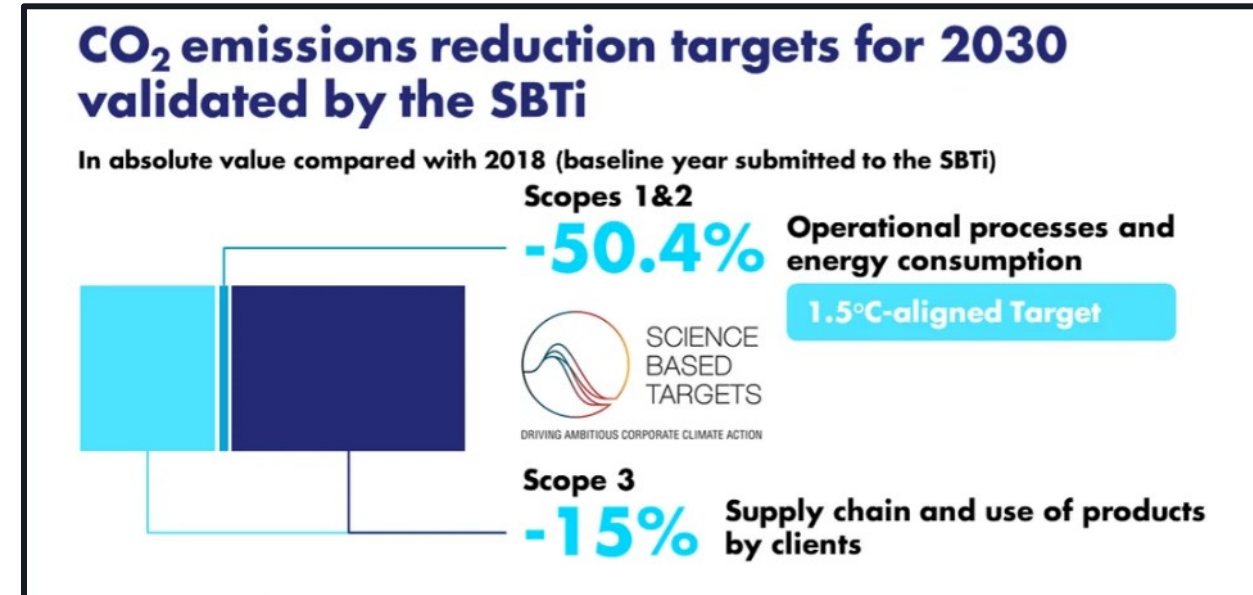
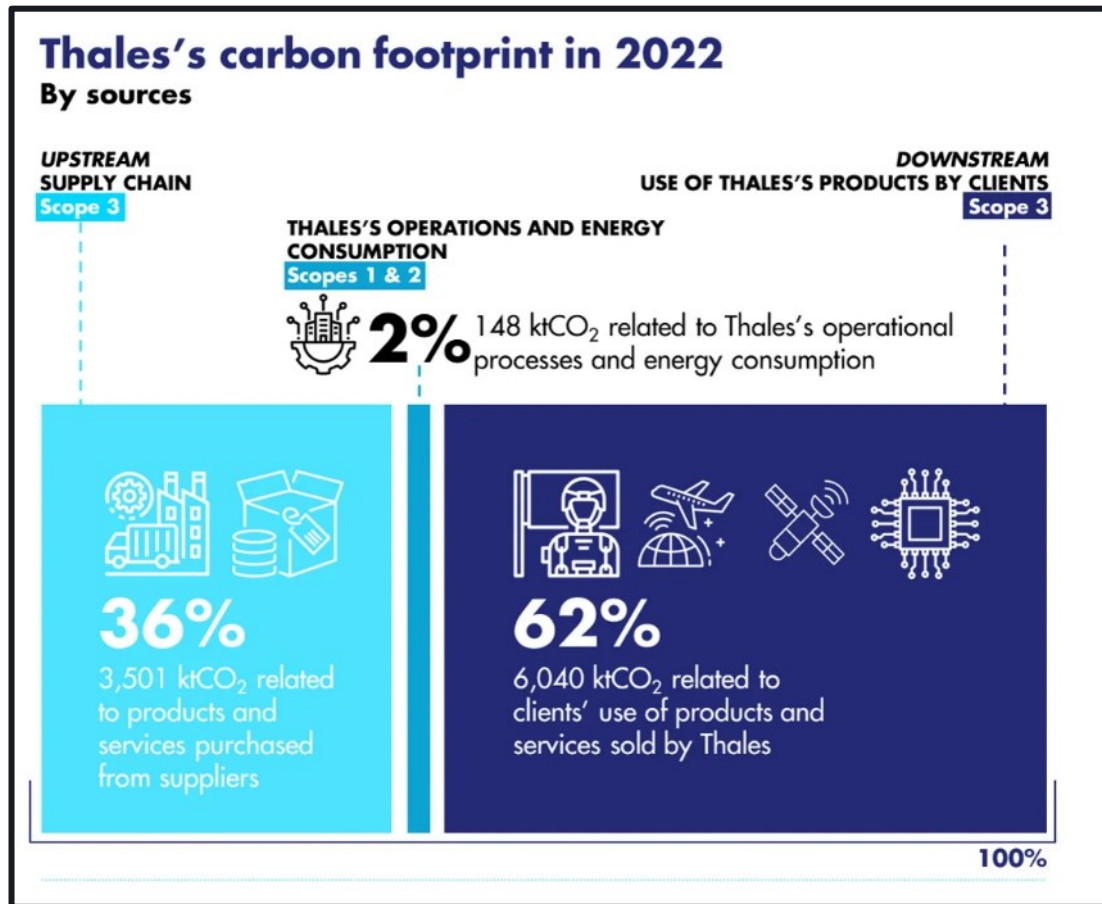


Cyber Security Products



Cybersecurity Premium Services

# Thales's strategy for a Low-Carbon future



Source: [Strategy for a Low-Carbon future](#) | Thales Group

# Why we perform LCA in Thales CDI?



## > Train the teams on ecodesign

- ▶ Raise awareness among teams
- ▶ Train teams on ecodesign



## > Measure and reduce the environmental impact

- ▶ Determine most impactful products
- ▶ Determine the impacts
- ▶ Choose the relevant ecopractices

“According to you, to what level of eco-design will you position your approach?”



## > Customers' requests

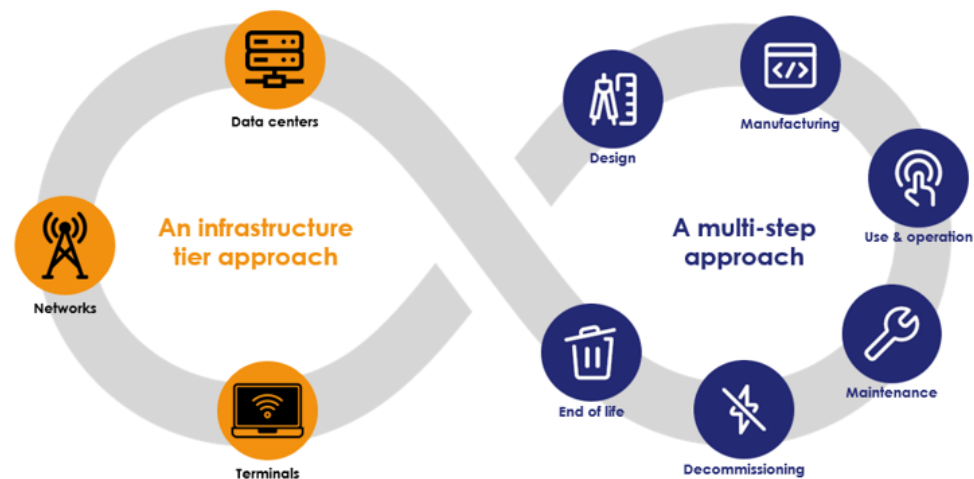
- ▶ Answer customers on environmental impacts
- ▶ Answer customers' requests on LCA



# How we perform simplified LCA for digital products in Thales CDI?

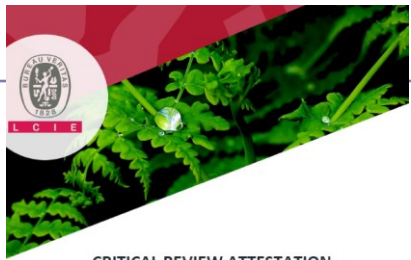
## Simplified LCA

Simplified Life-Cycle Assessment based on ISO, ITU and ADEME methodological recommendations



## LCA with critical review

First Life-Cycle Assessment (LCA) with critical review



CRITICAL REVIEW ATTESTATION

LCA n°	22376479-003028
CLIENT	THALES
LIFE CYCLE ASSESSMENT REPORT	ESL_LCA_report_L1_11_V2.2
CONFORMITY	The Life Cycle Assessment study is compliant with ISO 14040:2006 and ISO 14044:2006. The critical review has been done in compliance with ISO 14071:2014. Any change to the audited documents renders the attestation invalid.
VERIFIER	François DOMON, LCE Bureau Veritas
LOCATION, DATE	At Marnay November 28, 2024
SIGNATURE	

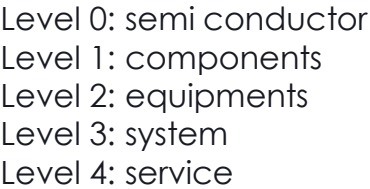


LIFE CYCLE ASSESSMENT  
CRITICAL REVIEW REPORT

ESIM SOLUTION - ODC CONSUMER  
THALES

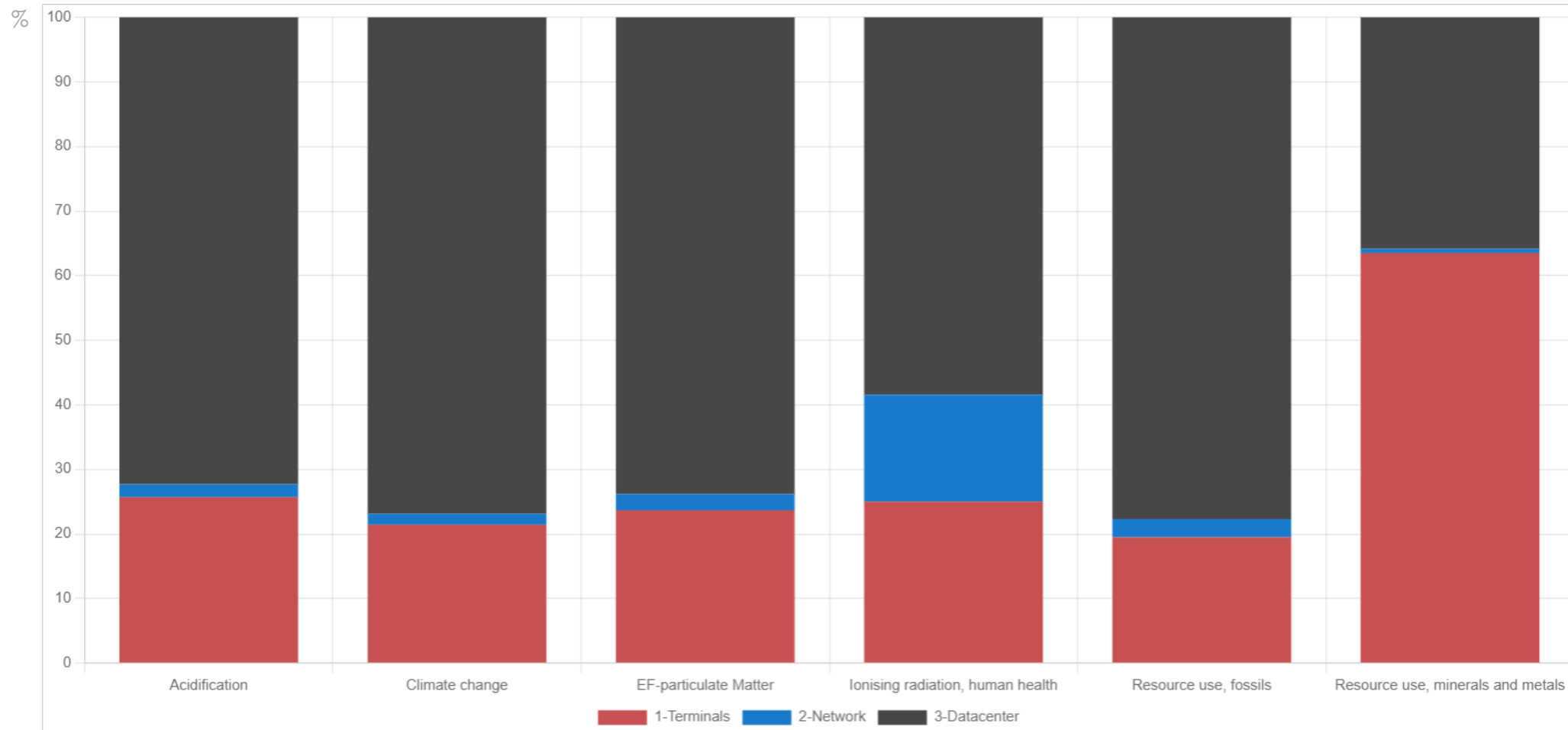


## > EIME tool from Bureau Veritas



# An example of simplified LCA results

## > Impacts by tier



Most of the impacts due to datacenters.

Except on minerals and metals resource use due to terminals.

# What challenges are we facing?



## > Data & database

- Lack of primary data (third parties)
- Lack of transparency (public cloud providers)
- Choice of databases and database updates (serverless)



## > Methodology

- Lack of PEF for precise products
- Choice of functional units
- Choice of allocation formula



## > Business growth

- Interlinks between business growth, cloud elasticity and the global environmental footprint of the solution
- Another measurement tool for global environmental footprint





# Next steps

## Collective improvements on LCA methodology for digital products

- Improve transparency of third parties and availability of data
- Share methodologies and allocation factors for specific use cases
- Consolidate database(s) for digital solutions

## Comparative LCAs

- Comparison between physical SIM and eSIM?
- Comparison between physical banking cards versus digital and virtual cards?

## Estimate indirect environmental impacts of our digital solutions

- Estimate second- and higher-order effects of our digital solutions



# Thank you

---

**Aurore Tual**

Digital Eco Design Program Manager



[aurore.tual@thalesgroup.com](mailto:aurore.tual@thalesgroup.com)